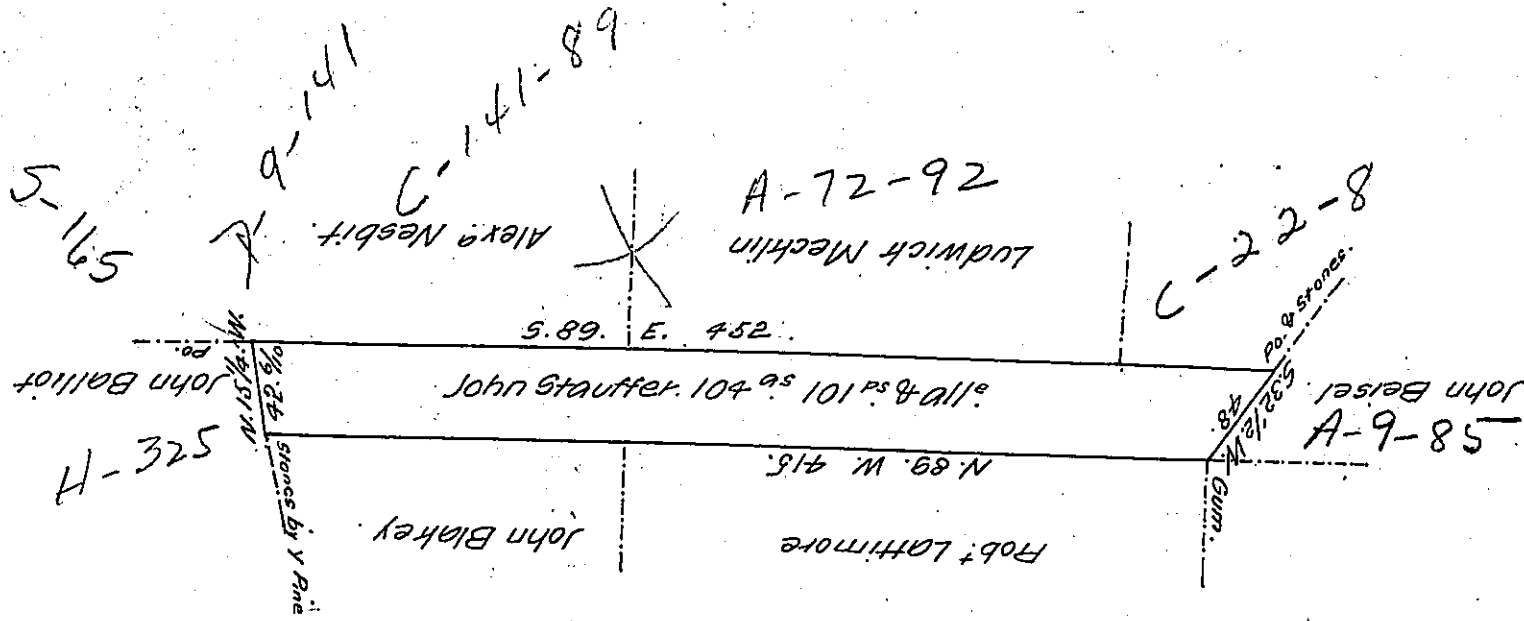


Butler
Luzerne.



*Draught of a tract of Land Situate in the Township of Sugarloaf
Luzerne County and adjoining Lands Surveyed to Ludwick Mecklin and
others. Containing One hundred and four acres & one hundred & one perches
of unimproved Land with the usual allowance of Six per ct % Surveyed
the above described tract of Land the 1st day of October A. D. 1830 for
John Stauffer by virtue of his Warrant dated the 8th day of April 1830.*

Henry Colt D.S.

*To Jacob Spangler Esq.
Surveyor General.*

*IN TESTIMONY that the above is a copy of the original remaining on file in
the Department of Internal Affairs of Pennsylvania, made
conformably to an Act of Assembly approved the 16th day of
February, 1833, I have hereunto set my Hand and caused
the Seal of said Department to be affixed at Harrisburg,
this thirtyfirst day of January 1907.*

Geo D Brown
Secretary of Internal Affairs.